
IG Goldman Sachs U.S. Equity Fund

Interim Management Report of Fund Performance

For the six-month period ended September 30, 2009

This interim Management Report of Fund Performance contains financial highlights, but does not contain the complete interim or annual financial statements of the investment fund. If the interim financial statements of your investment fund did not accompany the mailing of this report, you may receive a copy of them or the annual financial statements, or annual Management Report of Fund Performance, at your request, and at no cost, by calling 1-888-746-6344 (1-800-661-4578 if you live in Quebec) or by writing to us at 447 Portage Avenue, Winnipeg, Manitoba, R3C 3B6 (2001 University Street, Suite 2000, Montreal, Quebec, H3A 2A6 if you live in Quebec), or by visiting our website at www.investorsgroup.com or SEDAR at www.sedar.com.

Securityholders may also use one of these methods to request a copy of the investment fund's proxy voting policies and procedures, proxy voting disclosure record, or quarterly portfolio disclosure.

Every effort has been made to ensure that the information contained in this Report is accurate as of September 30, 2009 (October 23, 2009 for the discussion under Recent Developments), however, the Fund cannot guarantee the accuracy or the completeness of this material. Please refer to the Fund's Prospectus and audited annual financial statements for more information.

For current net asset values per unit for the Fund and for more recent information on general market events, please visit our website at www.investorsgroup.com.

Caution regarding forward-looking statements

This report may contain forward-looking statements about the Fund, including its strategy, expected performance and condition. Forward-looking statements include statements that are predictive in nature, that depend upon or refer to future events or conditions, or that include words such as "expects", "anticipates", "intends", "plans", "believes", "estimates" or negative versions thereof and similar expressions.

In addition, any statement that may be made concerning future performance, strategies or prospects, and possible future Fund action, is also a forward-looking statement. Forward-looking statements are based on current expectations and projections about future events and are inherently subject to, among other things, risks, uncertainties and assumptions about the Fund and economic factors.

Forward-looking statements are not guarantees of future performance, and actual events and results could differ materially from those expressed or implied in any forward-looking statements made by the Fund. Any number of important factors could contribute to these digressions, including, but not limited to, general economic, political and market factors in North America and internationally, interest and foreign exchange rates, global equity and capital markets, business competition, technological change, changes in government regulations, unexpected judicial or regulatory proceedings, and catastrophic events.

We stress that the above mentioned list of important factors is not exhaustive. We encourage you to consider these and other factors carefully before making any investment decisions and we urge you to avoid placing undue reliance on forward-looking statements. Further, you should be aware of the fact that the Fund has no specific intention of updating any forward-looking statements whether as a result of new information, future events or otherwise, prior to the release of the next Management Report of Fund Performance.

Management Discussion of Fund Performance

This management discussion of Fund performance presents views of the portfolio management team about the significant factors and developments during the past six months that have affected the Fund's performance and outlook since March 31, 2009, the Fund's most recent fiscal year-end. This report should be read in conjunction with the annual Management Report of Fund Performance for the year ended March 31, 2009.

The commentary in this section is general information about the Fund's recent performance. For more information on the Fund's longer-term performance, please refer to the section under Past Performance later in this report.

Please read the caution regarding forward-looking statements located on the first page of this document.

Results of Operations

(based on information as of September 30, 2009)

The Fund's net assets increased by 15.6% during the period to \$223.1 million. This change was comprised primarily of gains of \$17.6 million from investment operations and an increase of \$12.5 million due to net proceeds from the issuance of the Fund's securities. Average net assets of the Fund for the period were \$209.7 million (2008 – \$234.1 million), a decrease of 10.4% compared to the six-month period ended September 30, 2008. Average net assets influence revenue earned and expenses incurred by the Fund during the period. The Fund's performance is discussed below. Performance will vary by series largely due to the extent that fees and expenses may differ between series. See Series Information later in this report.

The Fund underperformed its benchmark, the S&P 500 Index, for the six-month period ended September 30, 2009, due primarily to unfavourable security selection in the financials, consumer discretionary and health care sectors.

On the upside, stock selection in the information technology, telecommunication services and utilities sectors contributed positively to the Fund's performance.

The Fund's "Computer Optimized-Research Enhanced" (or "CORE"®) investment approach forecasts stock returns based on six investment themes including: valuation, quality, management, profitability, momentum and sentiment. Of these, sentiment, momentum, quality and management detracted from the Fund's relative performance during the period, while profitability and valuation factors boosted returns during the period.

Recent Developments

(based on information as of October 23, 2009)

Global equities responded to data showing early signs of economic recovery. This response had a positive influence on Fund returns.

The portfolio management team continues to believe that cheaper stocks should outpace more expensive ones and good-momentum stocks should perform better than poor-momentum stocks.

The portfolio management team also prefers stocks that attract positive attention from fundamental research analysts as well as shares of companies with strong profit margins, sustainable earnings and the ability to use capital to enhance shareholder value. As such, the Fund is expected to remain fully invested.

Related Party Transactions

I.G. Investment Management, Ltd. is the Manager, Trustee and Portfolio Advisor of the Fund. The Fund is offered through the Consultants of Investors Group Financial Services Inc. and Investors Group Securities Inc., together referred to as the Distributors. The Manager, Portfolio Advisor, Distributors and Trustee are, indirectly, wholly owned subsidiaries of IGM Financial Inc.

The following sub-advisor has been retained to provide investment services to the Fund:

- Goldman Sachs Asset Management L.P.

The Fund paid 2.25% (per annum) of its net assets to the Manager and Portfolio Advisor, in aggregate, for management and portfolio advisory services (see Management Fees).

The Fund paid the Manager an administration fee, including applicable implementation period adjustments, equal to 0.22% annually of the net assets attributable to Series A and B, and 0.20% annually of the net assets attributable to Series C. In exchange for the administration fee, the Manager pays the operating costs and expenses of the Fund, except for certain specified Fund costs.

The Fund paid the Distributors a service fee as compensation for providing or arranging for the provision of services to the Fund, including the issue or allotment of units. The Fund paid the Distributors 0.30% annually of the net assets attributable to Series A, 0.45% annually of the net assets attributable to Series B, and 0.50% annually of the net assets attributable to Series C. A portion of the service fee for Series C is rebated by the Distributors to the Fund quarterly as outlined in the Prospectus. This rebate is paid as a return of capital distribution to eligible unitholders and is reinvested in additional Series C units.

The Trustee is responsible for the overall direction and management of the affairs of the Fund. The Trustee is paid an annual fee of 0.05% of the average net assets of the Fund for its services.

Total payments by the Fund (excluding GST) to the Manager and parties related to the Manager for the six-month period ended September 30, 2009 were:

	\$000's
Management fee	2,365
Administration fee	44
Distributor service fee (net of rebates)	40
Trustee fee	53
	<u>2,502</u>

Certain other mutual funds distributed by Investors Group may invest in Series Z of this Fund. All such transactions in the Fund are executed in accordance with standing instructions approved by the Independent Review Committee and based on the pricing NAV per unit determined in accordance with the stated policies of the Fund on each transaction day. No commissions or other transaction fees were paid by the Fund in relation to these transactions. As of September 30, 2009, other funds held approximately 81.7% of the Fund's net assets.

Financial Highlights

The following tables show selected key financial information about the Fund and its financial performance for the six-month period ended September 30, 2009 and for up to the past five years.

Footnotes are presented after Ratios and Supplemental Data.

Net Assets per Unit¹

Series A (in \$)	6 mo Sep. 30 2009	6 mo Mar. 31 2009	12 mo Sep. 30 2008	12 mo Sep. 30 2007	12 mo Sep. 30 2006	12 mo Sep. 30 2005
Net assets, beginning of period²	7.52	9.34	11.88	12.66	12.01	11.81
Increase (decrease) from operations:						
Total revenue	0.12	0.04	0.12	0.25	0.17	0.27
Total expenses	(0.12)	(0.12)	(0.31)	(0.39)	(0.37)	(0.36)
Realized gains (losses) for the period	0.09	(1.98)	(1.60)	0.26	0.11	0.26
Unrealized gains (losses) for the period	0.53	0.33	(0.61)	(0.89)	0.76	(0.07)
Total increase (decrease) from operations³	0.62	(1.73)	(2.40)	(0.77)	0.67	0.10
Distributions:						
From income (excluding dividends)	-	-	-	-	-	-
From dividends	-	-	-	-	-	-
From capital gains	-	-	-	-	-	-
Return of capital	-	-	-	-	-	-
Total annual distributions⁴	-	-	-	-	-	-
Net assets at period end	8.13	7.52	9.34	11.88	12.66	12.01

Series B (in \$)	6 mo Sep. 30 2009	6 mo Mar. 31 2009	12 mo Sep. 30 2008	12 mo Sep. 30 2007	12 mo Sep. 30 2006	12 mo Sep. 30 2005
Net assets, beginning of period²	7.45	9.27	11.80	12.59	11.97	11.79
Increase (decrease) from operations:						
Total revenue	0.12	0.04	0.12	0.25	0.17	0.28
Total expenses	(0.12)	(0.12)	(0.33)	(0.41)	(0.39)	(0.38)
Realized gains (losses) for the period	0.09	(1.97)	(1.59)	0.26	0.11	0.33
Unrealized gains (losses) for the period	0.54	0.32	(0.61)	(0.87)	0.73	(0.10)
Total increase (decrease) from operations³	0.63	(1.73)	(2.41)	(0.77)	0.62	0.13
Distributions:						
From income (excluding dividends)	-	-	-	-	-	-
From dividends	-	-	-	-	-	-
From capital gains	-	-	-	-	-	-
Return of capital	-	-	-	-	-	-
Total annual distributions⁴	-	-	-	-	-	-
Net assets at period end	8.06	7.45	9.27	11.80	12.59	11.97

Series C (in \$)	6 mo Sep. 30 2009	6 mo Mar. 31 2009	12 mo Sep. 30 2008	12 mo Sep. 30 2007	12 mo Sep. 30 2006	12 mo Sep. 30 2005
Net assets, beginning of period²	7.43	9.25	11.77	12.57	11.95	11.77
Increase (decrease) from operations:						
Total revenue	0.12	0.03	0.12	0.25	0.17	0.29
Total expenses	(0.11)	(0.11)	(0.28)	(0.36)	(0.34)	(0.34)
Realized gains (losses) for the period	0.09	(1.96)	(1.59)	0.26	0.11	0.31
Unrealized gains (losses) for the period	0.54	0.32	(0.61)	(0.89)	0.75	(0.01)
Total increase (decrease) from operations³	0.64	(1.72)	(2.36)	(0.74)	0.69	0.25
Distributions:						
From income (excluding dividends)	-	-	-	-	-	-
From dividends	-	-	-	-	-	-
From capital gains	-	-	-	-	-	-
Return of capital	-	-	-	-	-	-
Total annual distributions⁴	-	-	-	-	-	-
Net assets at period end	8.03	7.43	9.25	11.77	12.57	11.95

Series Z (in \$)	6 mo Sep. 30 2009	6 mo Mar. 31 2009	12 mo Sep. 30 2008	12 mo Sep. 30 2007	12 mo Sep. 30 2006	12 mo Sep. 30 2005
Net assets, beginning of period²	6.86	8.51	10.76	11.42	10.80	10.58
Increase (decrease) from operations:						
Total revenue	0.11	0.03	0.11	0.22	0.16	0.25
Total expenses	(0.09)	(0.09)	(0.23)	(0.31)	(0.29)	(0.29)
Realized gains (losses) for the period	0.08	(1.80)	(1.45)	0.23	0.10	0.23
Unrealized gains (losses) for the period	0.50	0.30	(0.55)	(0.80)	0.68	-
Total increase (decrease) from operations³	0.60	(1.56)	(2.12)	(0.66)	0.65	0.19
Distributions:						
From income (excluding dividends)	-	-	-	-	-	-
From dividends	-	-	-	-	-	-
From capital gains	-	-	-	-	-	-
Return of capital	-	-	-	-	-	-
Total annual distributions⁴	-	-	-	-	-	-
Net assets at period end	7.44	6.86	8.51	10.76	11.42	10.80

Ratios and Supplemental Data

Series A	6 mo Sep. 30 2009	6 mo Mar. 31 2009	12 mo Sep. 30 2008	12 mo Sep. 30 2007	12 mo Sep. 30 2006	12 mo Sep. 30 2005
Total net asset value (pricing NAV) ² (\$000's)	20,300	18,000	20,925	23,170	18,406	12,874
Number of units outstanding (000's)	2,493	2,390	2,235	1,950	1,455	1,072
Management expense ratio ⁵ (%)	2.95	2.95	2.94	2.99	2.99	3.06
Management expense ratio before waivers or absorptions (%)	2.95	2.95	2.94	2.99	3.01	3.06
Trading expense ratio ⁶ (%)	0.03	0.03	0.02	0.04	0.03	0.03
Portfolio turnover rate ⁷ (%)	89.93	79.52	157.30	141.02	120.75	164.42
Net asset value per unit (pricing NAV) ² (\$)	8.14	7.53	9.36	11.89	12.66	12.01

Series B	6 mo Sep. 30 2009	6 mo Mar. 31 2009	12 mo Sep. 30 2008	12 mo Sep. 30 2007	12 mo Sep. 30 2006	12 mo Sep. 30 2005
Total net asset value (pricing NAV) ² (\$000's)	556	492	684	890	605	479
Number of units outstanding (000's)	69	66	74	75	48	40
Management expense ratio ⁵ (%)	3.10	3.10	3.09	3.14	3.14	3.21
Management expense ratio before waivers or absorptions (%)	3.10	3.10	3.09	3.14	3.16	3.21
Trading expense ratio ⁶ (%)	0.03	0.03	0.02	0.04	0.03	0.03
Portfolio turnover rate ⁷ (%)	89.93	79.52	157.30	141.02	120.75	164.42
Net asset value per unit (pricing NAV) ² (\$)	8.07	7.47	9.28	11.81	12.59	11.97

Series C	6 mo Sep. 30 2009	6 mo Mar. 31 2009	12 mo Sep. 30 2008	12 mo Sep. 30 2007	12 mo Sep. 30 2006	12 mo Sep. 30 2005
Total net asset value (pricing NAV) ² (\$000's)	20,026	19,596	26,358	39,215	44,510	48,318
Number of units outstanding (000's)	2,490	2,632	2,845	3,329	3,542	4,043
Management expense ratio ⁵ (%)	3.12	3.13	3.12	3.17	3.18	3.22
Management expense ratio before waivers or absorptions (%)	3.12	3.13	3.12	3.17	3.18	3.22
Trading expense ratio ⁶ (%)	0.03	0.03	0.02	0.04	0.03	0.03
Portfolio turnover rate ⁷ (%)	89.93	79.52	157.30	141.02	120.75	164.42
Net asset value per unit (pricing NAV) ² (\$)	8.04	7.45	9.26	11.78	12.57	11.95

Series Z	6 mo Sep. 30 2009	6 mo Mar. 31 2009	12 mo Sep. 30 2008	12 mo Sep. 30 2007	12 mo Sep. 30 2006	12 mo Sep. 30 2005
Total net asset value (pricing NAV) ² (\$000's)	182,531	155,229	170,902	168,666	117,918	77,996
Number of units outstanding (000's)	24,490	22,576	20,046	15,671	10,325	7,223
Management expense ratio ⁵ (%)	2.42	2.42	2.43	2.62	2.64	2.68
Management expense ratio before waivers or absorptions (%)	2.42	2.42	2.43	2.62	2.64	2.68
Trading expense ratio ⁶ (%)	0.03	0.03	0.02	0.04	0.03	0.03
Portfolio turnover rate ⁷ (%)	89.93	79.52	157.30	141.02	120.75	164.42
Net asset value per unit (pricing NAV) ² (\$)	7.45	6.88	8.52	10.77	11.42	10.80

¹ These calculations are prescribed by securities regulations and are not intended to be a reconciliation between opening and closing net assets per unit. This information is derived from the Fund's unaudited interim financial statements and audited annual financial statements. Effective after the close of business on September 30, 2008, the financial year-end of the Fund changed from September 30 to March 31. The Fund's year-end for tax reporting purposes is unaffected by this change.

² The net assets per security presented in the financial statements may differ from the net asset value calculated for Fund pricing purposes. This difference is due to the requirements of generally accepted accounting principles ("GAAP"), including CICA Handbook Section 3855, and may result in a different valuation of securities held by the Fund in accordance with GAAP than the market value used to determine net asset value of the Fund for the purchase and redemption of the Fund's units ("pricing NAV"). The impact of the adoption of this accounting policy for valuation of securities on the net assets per unit determined in accordance with GAAP as of October 1, 2006 was (0.01) for all series. The pricing NAV per unit at the end of the period is disclosed in Ratios and Supplemental Data.

³ Net asset value and distributions are based on the actual number of units outstanding at the relevant time. The increase/decrease from operations is based on the weighted average number of units outstanding over the financial period. In the period a series is established, the financial information is provided from the date of inception to the end of the period.

⁴ Distributions were paid in cash, reinvested in additional units of the Fund, or both.

⁵ Management expense ratio (MER) is based on total expenses, excluding commissions and other portfolio transaction costs, for the stated period and is expressed as an annualized percentage of daily average net assets during the period, except as noted. In the period a series is established, the management expense ratio is annualized from the date of inception to the end of the period.

For Series C, the service fees are divided by the assets attributable to Series C on the days on which the fee is charged. The MERs presented for Series C represent the maximum MER applicable to any account because service fee rebates have not been offset against service fees. Eligible clients in Series C are entitled to a rebate of service fees based on their asset levels held in the Fund and in other Investors Group mutual funds as outlined in the Fund's Prospectus. The rebate is distributed as a return of capital distribution to eligible unitholders and is required to be reinvested in additional Series C units at the net asset value per unit on the distribution date. Clients may receive a rebate in an amount of up to all of the service fees paid in Series C based on their asset levels held in their Fund(s). The annualized MER's for the six-month period ended September 30, 2009 are: Min. MER: 2.62%; Weighted Average MER: 2.74%; Max. MER: 3.12%.

Certain expenses that are non-recurring and/or otherwise uncertain as to their future timing and amount have not been annualized.

⁶ The trading expense ratio represents total commissions and other portfolio transaction costs incurred as an annualized percentage of daily average net assets during the period.

⁷ The Fund's portfolio turnover rate indicates how actively the Fund's Portfolio Advisor manages its portfolio investments. A portfolio turnover rate of 100% is equivalent to the Fund buying and selling all of the securities in its portfolio once in the course of the period. The higher a Fund's portfolio turnover rate in a period, the greater the trading costs payable by the Fund in the period, and the greater the chance of an investor receiving taxable capital gains in the period. There is not necessarily a relationship between a high turnover rate and the performance of a Fund. Costs incurred to realign the Fund's portfolio after a fund merger, if any, are excluded from the portfolio turnover rate.

Management Fees

The Fund pays Investors Group a management fee. The management fee paid by each series is calculated as a percentage of the net asset value of the series, as of the close of business on each business day (see Related Party Transactions for rates payable by each series). Management fees were used in part to pay costs incurred in providing investment advisory and management services, and distribution-related services including the cost of financial planning services, consultant commissions and bonuses, marketing and other Fund promotional activities and educational conferences.

For the six-month period ended September 30, 2009, on average approximately 54% of the total management fee revenues received from all Investors Group Funds was attributable to investment advisory and management services. The balance of these fees was used to fund the payment of distribution-related services.

For this Fund, investment advisory and management services represented approximately 57%, and distribution-related services represented approximately 43%, of the management fees paid for the six-month period ended September 30, 2009. This may vary by series depending upon the assets invested in each series.

Past Performance

It is important to remember that past performance doesn't necessarily indicate future performance. The returns presented below:

- assume that all distributions, except for service fee rebates, are reinvested into the Fund;
- do not include sales charges, income taxes, or optional expenses that reduce returns;
- show performance based on Canadian dollar returns; and
- show performance for the six-month period ended September 30, 2009 and for each of the past 10 financial years, or since the series started.

Financial years are as follows:

- 2000 to 2008 – up to 12 months ended September 30
- 2009 – six months ended March 31

Inception dates of the series within the past 10½ financial years are:

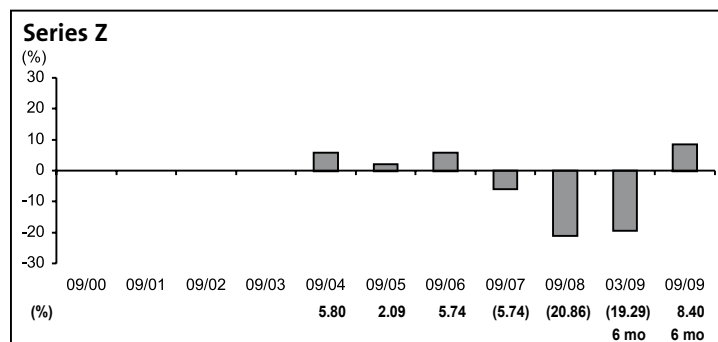
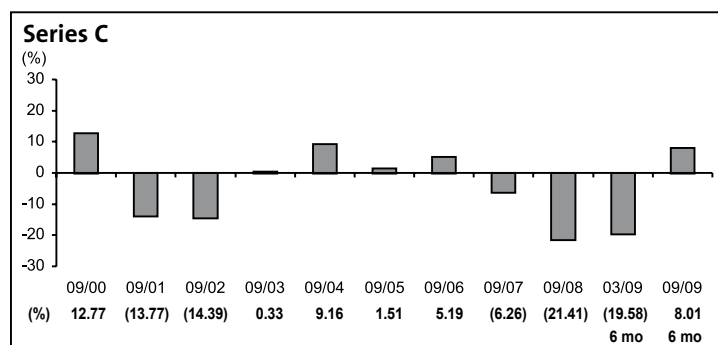
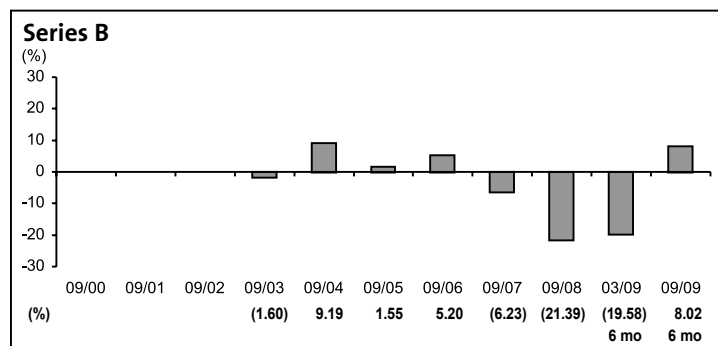
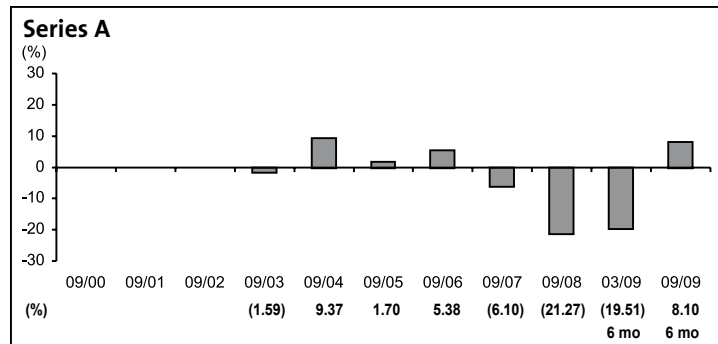
- Series A, July 28, 2003
- Series B, July 28, 2003
- Series Z, October 15, 2003

Performance during these periods may have been impacted by the following events:

- In July 2002, Goldman Sachs Asset Management became the portfolio sub-advisor of this Fund, and the investment objective of the Fund changed from being a U.S. balanced fund to become a U.S. equity fund.
- During some performance measurement periods certain fees or expenses may have been waived or absorbed by the Manager. There is no assurance that fees will be waived in the future.
- In October 2007, the Fund began to pay an administration fee. In exchange, the Manager began to pay certain operating costs and expenses that had been paid by the Fund.

Year-by-Year Returns

These bar charts show how much an investment in units made on the first day of each financial year would have increased or decreased by the end of the respective period. For the first year of a series, the percentage shown will be the actual return of the series from its inception date. The charts illustrate how the Fund's performance has changed over time.



Series Information

Series	Purchase Options Available DSC ¹	NL ²	Deferred Sales Charges	Service Fee	Administration Fee ³
Series A	✓		up to 5.50%	0.30%	0.22%
Series B		✓	- %	0.45%	0.22%
Series C	✓	✓	up to 5.50%	up to 0.50% ⁴	0.20%
Series Z ⁵	n/a	n/a	- %	- %	- %

¹ Deferred Sales Charge (DSC) investments have a redemption fee when sold that declines to 0% after 7 years. See the Fund's Prospectus for additional information.

² No Load (NL) investments do not have a DSC when sold. Other fees may apply. See the Fund's Prospectus for additional information.

³ Includes applicable implementation period adjustment as outlined in the Prospectus.

⁴ Eligible clients are entitled to a rebate of the service fee based on their asset levels held in the Fund and in other Investors Group mutual funds as outlined in the Fund's Prospectus.

⁵ For details on Series Z see Related Party Transactions.

Summary of Investment Portfolio

at September 30, 2009

The largest holdings of the Fund (up to 25) at the end of the period, and the major asset classes in which the Fund was invested, are indicated below. The Fund held no short positions at the end of the period. This summary of investment portfolio may change due to ongoing portfolio transactions. An update of the Fund's summary of investment portfolio as at the end of the next quarter will be available. Please see the front page for information about how it can be obtained.

Summary of Top 25 Holdings

	% of net asset value ¹
Microsoft Corp.	4.2
Exxon Mobil Corp.	3.3
Devon Energy Corp.	3.1
Lorillard Inc.	2.6
United Parcel Service Inc. Class B	2.6
Cash and cash equivalents	2.3
Eli Lilly and Co.	2.3
Wells Fargo & Co.	2.1
Pfizer Inc.	2.0
Seagate Technology	2.0
Time Warner Inc.	2.0
AT&T Inc.	1.8
Bank of America Corp.	1.8
Gilead Sciences Inc.	1.8
T. Rowe Price Group Inc.	1.7
² S&P 500 Index Futures	1.7
ConocoPhillips	1.6
Unum Group	1.6
Texas Instruments Inc.	1.6
Chevron Corp.	1.6
Accenture PLC Class A	1.5
Qualcomm Inc.	1.4
Amgen Inc.	1.4
Biogen Idec Inc.	1.3
Intel Corp.	1.3
	50.6

¹ Percentage of net assets for futures contracts based on notional value of open contracts.

² Largest single issuer on index, Exxon Mobil Corp., represents 3.5% of total index (0.1% of Fund's net assets).

Summary of Composition of the Portfolio

	% of net asset value ¹
BY ASSET TYPE	
Equities	97.9
Cash and cash equivalents	0.7
Other net assets (liabilities)	1.4
Total	100.0
BY COUNTRY	
United States	97.9
BY SECTOR	
Information Technology	19.9
Financials	15.3
Health Care	13.2
Energy	11.8
Consumer Staples	10.8
Industrials	9.7
Consumer Discretionary	9.2
Materials	3.6
Telecommunication Services	2.7
Utilities	1.7
	97.9

¹ Percentage of net assets for futures contracts based on notional value of open contracts.

Sales commissions, trailing commissions, management fees and expenses all may be associated with mutual fund investments. Please read the Prospectus before investing. The indicated rates of return are the historical annual compounded total returns including changes in unit value and reinvestment of all distributions (except for service fee rebates) and do not take into account sales, redemption, distribution or optional charges or income taxes payable by any investor that would have reduced returns. Mutual funds are not guaranteed. Their value changes frequently and past performance may not be repeated.

